



European
Reference
Network
for rare or low prevalence
complex diseases

Network
Epilepsies (ERN EpiCARE)



Great Ormond Street **NHS**
Hospital for Children
NHS Foundation Trust

Joint Research and Development Office
Division of Research and Innovation

CPMS BASICS

Arunganesh Velurajah

23/02/2019

Contents

Introduction

Features of CPMS

Roles in CPMS

Current state

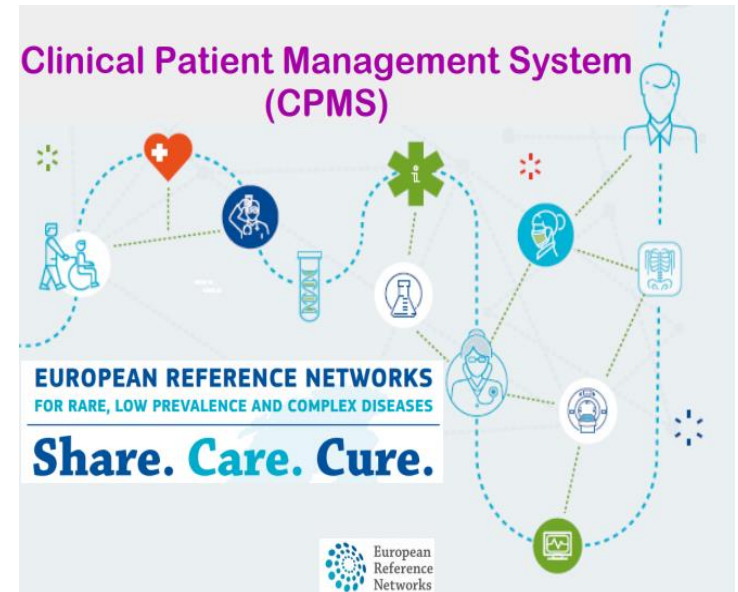
Demonstration

Links



Introduction to CPMS

- Clinical Patient Management System, known as CPMS, is a secure web-based application to support European Reference Networks in the diagnosis and treatment of rare or low prevalence complex diseases or conditions across national borders.
- The system allows the most knowledgeable healthcare professionals to collaborate virtually so there is no longer a need for the patient to travel to receive a diagnosis or treatment; furthermore, it allows clinicians to use a secure web-based application to ensure all information provided is completely confidential.
- The ERN Experts (from one or more ERNs) will gather in multidisciplinary panels and use CPMS to carry out e-consultations of rare and complex cases
- Panels are composed of experts with complementary expertise, which is essential for solving complex cases in the field of rare diseases and providing the best possible healthcare.
- CPMS usage is Key performance indicator of EpiCARE for the EU



Features of the CPMS

- Medical Image Viewer (DICOM, Pathology)
- Research - Real-time & off-line communication
- Performance Indicators
- Crossover between ERNs
- De-Identification Mechanisms
- IHE – data transfer from hospitals
- Database/Reporting

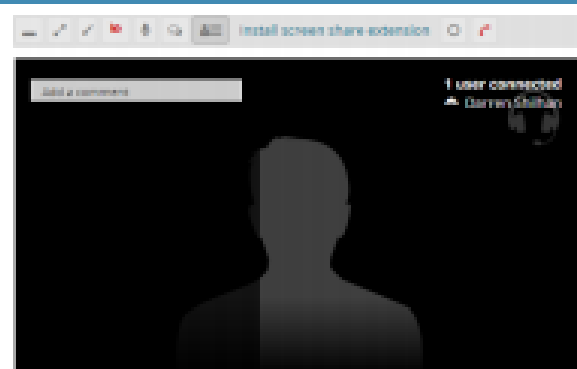
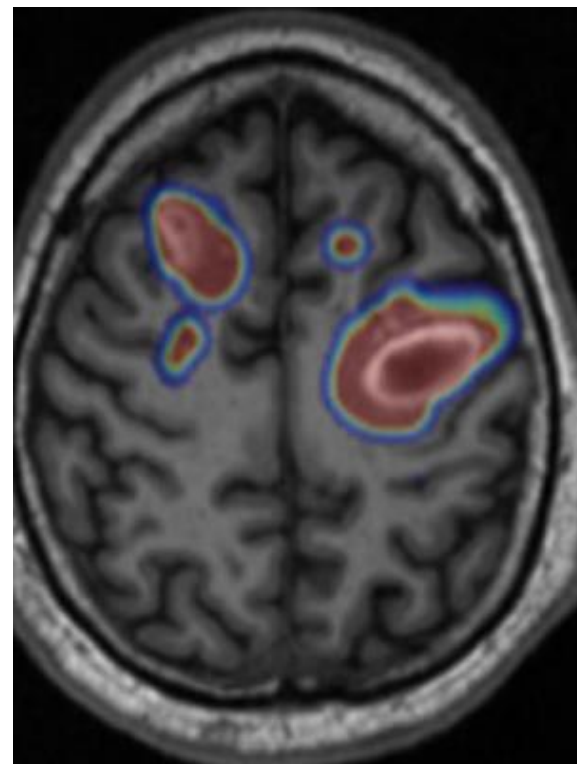


Table with 2 columns: Created, Last Update

Created	Last Update
Document	1/10/2012 10:11

Additional data returned by: [button] [button] [button]



CPMS Roles

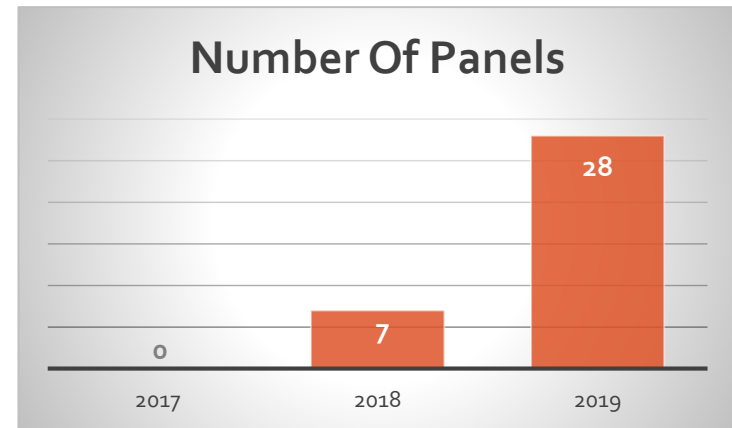
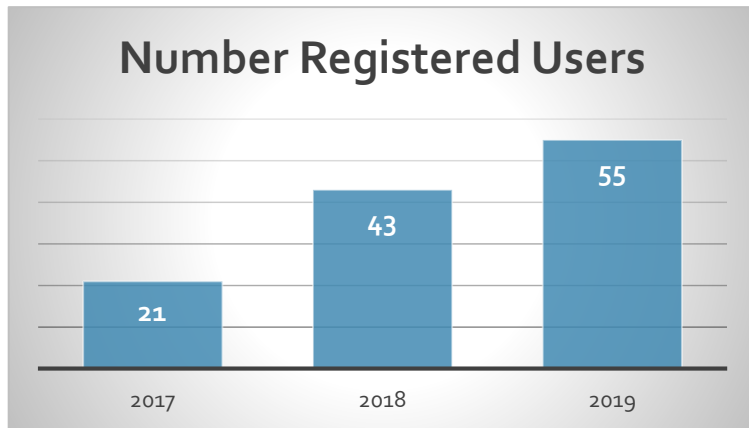


*Access Profile

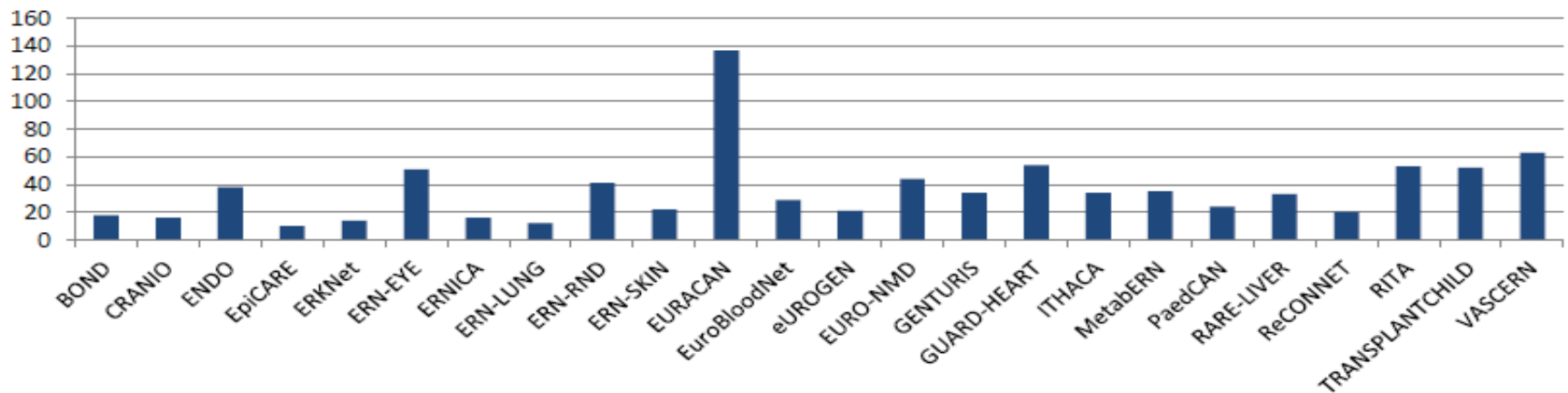
Name
<input type="checkbox"/> Coordinator
<input type="checkbox"/> Dispatcher
<input type="checkbox"/> HP
<input type="checkbox"/> Panel Manager ERN
<input type="checkbox"/> Panel Manager HCP
<input type="checkbox"/> Researcher

- Health professional (HP) - Is the basic level of access, to carry our healthcare activities
- Coordinator - facilitates coordination within the ERN, KPI, Handles access request
- Dispatcher -The role delegates one task of a Coordinator
- Researcher - This is a role that enables a user to build queries and reports on data entered per ERN using anonymised data
- **Guest access - Affiliated members, Local centres**

Current state of CPMS



Unique active users



Demonstration

- Account set up –EU login and SAAS
- Adding patients to the CPMS and inviting Panels
- Any questions



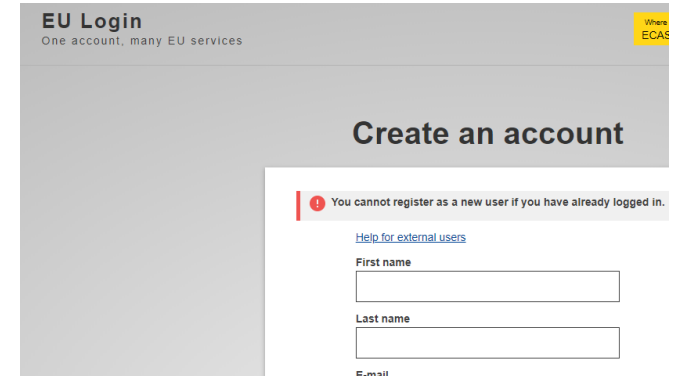
The screenshot shows the top navigation bar of the Saas - Authorization System CPMS. It includes the European Commission logo, the text 'Saas - Authorization System CPMS', and a 'Privacy' icon. Below the navigation bar, there are tabs for 'Home', 'Request access', and 'User Data details'. A search bar contains the text 'CPMS' and a 'Request' button.

Secure Login

You can Login to the CPMS ERN through the EU Login Authentication Service.

[➔ Login via EU Login](#)

- Video: Getting Set-Up and Logged In to CPMS
- Only ERN members and ERN guest users can be authorised users of the CPMS.
- To access the CPMS you need to have an EU login. To create an EU login, [click here](#).
- To request authorisation to use the CPMS, [click here](#).
- To request access to the ERN Collaborative Platform (ECP) to exchange non clinical data with the other members of your ERN, [click here](#).
- For more information on the European Reference Networks, please visit ec.europa.eu.



The screenshot shows the 'EU Login' page with the heading 'Create an account'. It includes the text 'One account, many EU services' and a 'More ECAS' link. A red error message states: 'You cannot register as a new user if you have already logged in.' Below the message is a link for 'Help for external users' and three input fields for 'First name', 'Last name', and 'E-mail'.

CPMS Useful Links

- Learning environment. CPMS Training (see videos after log in):

<https://cpms-training.ern-net.eu/>

Usenam: eepicarehpuser1: Password: cpmsern

- Use CPMS Production:

<https://cpms.ern-net.eu/login/>

- CPMS Overview Video:

<https://webgate.ec.europa.eu/ern/imgs/cpms%20overview.mp4>

- Ask CPMS Support & Offer feedback:

a.velurajah@ucl.ac.uk

SANTE-ERN-CPMS-ITSupport@ec.europa.eu

Summary

Introduction

Features in CPMS

Roles in CPMS

Current State

Demonstration

Links

Thanks! 