

The European Reference Network for Rare and Complex Epilepsies



EpiCARE Coordination:

Hospital Sant Joan de Déu
143 Carrer del Comte d'Urgell
08036 Barcelona, Spain



Pr. Alexis ARZIMANOGLOU

helpdesk@epi-care.eu



The European Reference Networks aim to improve care for rare diseases to reduce inequalities in access to diagnosis and treatment. EpiCARE is dedicated to **rare and complex epilepsies**



Where is EpiCARE?

THE NETHERLANDS University Medical Center Utrecht (UMCU)

BELGIUM University Hospital Gasthuisberg KUL, Leuven / BRACE Brussels Rare and Complex Epilepsies Consortium

LUXEMBOURG Centre Hospitalier de Luxembourg

FRANCE EPIRARES Consortium, Paris / CHU Necker - Enfants Malades APHP, Paris / CHU Marseille APHM / CHRU Lille / CHU Lyon HCL / EGEE Consortium Strasbourg-Nancy

SPAIN Hospital Sant Joan de Déu and Hospital Clínic, Barcelona / Hospital del Mar, Barcelona / Hospital Universitario La Fe, Valencia

PORTUGAL CHU de Coimbra / Hospital de Santa Maria, Lisbon / Centro Hospitalar do Porto

NORWAY Norwegian National Unit for Epilepsy, Oslo

SWEDEN Sahlgrenska University Hospital, Gothenburg

FINLAND Kuopio University Hospital / Consortium ERNEPI Helsinki-Oulu

DENMARK Rigshospitalet, Copenhagen / Danish Epilepsy Center Filadelfia, Dianalund / Aarhus Universitets Hospital

GERMANY Bonn University Hospital / Universitätsklinikum Erlangen / University Hospital, Freiburg / Universitätsklinikum Tübingen

ESTONIA Tartu University Hospital / Tallinn Children's Hospital

LITHUANIA Hospital of the Lithuanian University of Health Sciences, Kaunas / Vilnius Institute of Clinical Medicine

POLAND Children's Memorial Health Institute Warsaw

LATVIA University Children's Clinical Hospital, Riga

CZECH REPUBLIC Brno Epilepsy Center / Motol University Hospital Prague

AUSTRIA Christian Doppler Medical Centre, Salzburg / Medical University of Vienna

SLOVENIA Ljubljana University Medical Centre

HUNGARY National Institute of Clinical Neurosciences Budapest

CROATIA University Hospital Centre Sestre Milosrdnice, Zagreb / University Hospital Centre, Zagreb

ROMANIA Alexandru Obregia Clinical Hospital, Bucharest

CYPRUS The Cyprus Institute of Neurology and Genetics, Nicosia

* **MALTA** Mater Dei Hospital

ITALY IRCCS Istituto Gaslini, Genova / IRCCS Carlo Besta (Milano Consortium) / IRCCS Fondazione Mondino, Pavia / Ospedale Pediatrico Bambino Gesù, Rome / AOUI di Verona / IRCCS Institute of Neurological Sciences of Bologna / Azienda Ospedaliera Universitaria Meyer, Firenze



Funded by the European Union

The European Reference Network for Rare and Complex Epilepsies



Executive Committee

Arzimanoglou Alexis (Spain)
Barba Carmen (Italy)
Beniczky Sandor (Denmark)
Blümcke Ingmar (Germany)
Braun Kees (The Netherlands)
Cross Helen (UK)
Helmstaedter Christoph (Germany)
Kalviainen Reetta (Finland)

Kotulska Józwiak Kasia (Poland)
Jansen Floor (The Netherlands)
Lagae Lieven (Belgium)
Lesca Gaetan (France)
Lossius Morten Ingvar (Norway)
Malenica Maša (Croatia)
Marusič Petr (Czech Republic)
Nabbout Rima (France)
Pressler Ronit (UK)
Rubboli Guido (Denmark)

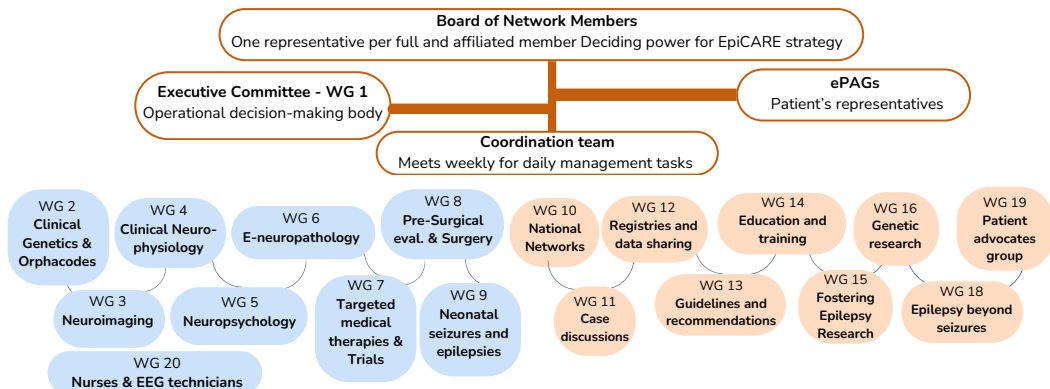
Ryvlin Philippe (Switzerland)
Specchio Nicola (Italy)
Trinka Eugen (Austria)
Vigevano Federico (Italy)

Patient representatives:
Brambilla Isabella (Italy)
Irena Bibic (Croatia)

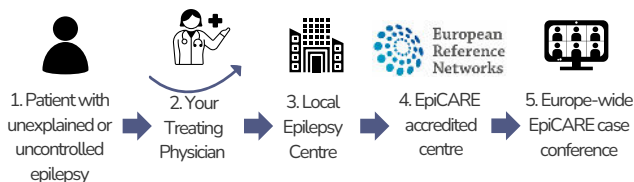
Management Team:

Geroldinger Martin (Austria)
Openshaw Nicola (UK)
Robert Anne (France)
Roig Laura (Spain)
Tchaicha Sébile (France)
Trebino Belén (Spain)
Van Hulle Johanna (Belgium)

Helpdesk: ANT Congrès
(Clotilde Guérineau, France)



How to get advice from EpiCARE?



Visit our Collaborative Genetic Research webpage



Please find the calls published on the EpiCARE website to encourage participation in collaborative genetic research projects

