

# The European Reference Network for Rare and Complex Epilepsies



## EpiCARE Coordination:

Hospital Sant Joan de Déu  
143 Carrer del Comte d'Urgell  
08036 Barcelona, Spain



Pr. Alexis ARZIMANOGLOU

helpdesk@epi-care.eu



The European Reference Networks aim to improve care for rare diseases to reduce inequalities in access to diagnosis and treatment. EpiCARE is dedicated to **rare and complex epilepsies**



## Where is EpiCARE?

**THE NETHERLANDS** University Medical Center Utrecht (UMCU)

**BELGIUM** University Hospital Gasthuisberg KUL, Leuven / BRACE Brussels Rare and Complex Epilepsies Consortium

**LUXEMBOURG** Centre Hospitalier de Luxembourg

**FRANCE** EPIRARES Consortium, Paris / CHU Necker - Enfants Malades APHP, Paris / CHU Marseille APHM / CHRU Lille / CHU Lyon HCL / EGEE Consortium Strasbourg-Nancy

**SPAIN** Hospital Sant Joan de Déu and Hospital Clínic, Barcelona / Hospital del Mar, Barcelona / Hospital Universitario La Fe, Valencia

**PORTUGAL** CHU de Coimbra / Hospital de Santa Maria, Lisbon / Centro Hospitalar do Porto

**NORWAY** Norwegian National Unit for Epilepsy, Oslo

**SWEDEN** Sahlgrenska University Hospital, Gothenburg

**FINLAND** Kuopio University Hospital / Consortium ERNEpi Helsinki-Oulu

**DENMARK** Rigshospitalet, Copenhagen / Danish Epilepsy Center Filadelfia, Dianalund / Aarhus Universitets Hospital

**GERMANY** Bonn University Hospital / Universitätsklinikum Erlangen / University Hospital, Freiburg / Universitätsklinikum Tübingen

**ESTONIA** Tartu University Hospital / Tallinn Children's Hospital

**LITHUANIA** Hospital of the Lithuanian University of Health Sciences, Kaunas / Vilnius Institute of Clinical Medicine

**POLAND** Children's Memorial Health Institute Warsaw

**LATVIA** University Children's Clinical Hospital, Riga

**CZECH REPUBLIC** Brno Epilepsy Center / Motol University Hospital Prague

**AUSTRIA** Christian Doppler Medical Centre, Salzburg / Medical University of Vienna

**SLOVENIA** Ljubljana University Medical Centre

**HUNGARY** National Institute of Clinical Neurosciences Budapest

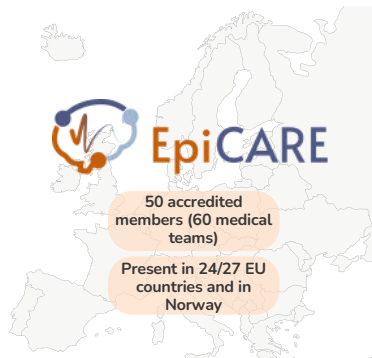
**CROATIA** University Hospital Centre Sestre Milosrdnice, Zagreb / University Hospital Centre, Zagreb

**ROMANIA** Alexandru Obregia Clinical Hospital, Bucharest

**CYPRUS** The Cyprus Institute of Neurology and Genetics, Nicosia

\* **MALTA** Mater Dei Hospital

**ITALY** IRCCS Istituto Gaslini, Genova / IRCCS Carlo Besta (Milano Consortium) / IRCCS Fondazione Mondino, Pavia / Ospedale Pediatrico Bambino Gesù, Rome / AOUI di Verona / IRCCS Institute of Neurological Sciences of Bologna / Azienda Ospedaliera Universitaria Meyer, Firenze



Funded by the European Union

# The European Reference Network for Rare and Complex Epilepsies



## Executive Committee

Arzimanoglou Alexis (Spain)  
Barba Carmen (Italy)  
Beniczky Sandor (Denmark)  
Blümcke Ingmar (Germany)  
Braun Kees (The Netherlands)  
Cross Helen (UK)  
Helmstaedter Christoph (Germany)  
Kalviainen Reetta (Finland)

Kotulska Józwiak Kasia (Poland)  
Jansen Floor (The Netherlands)  
Lagae Lieven (Belgium)  
Lesca Gaetan (France)  
Lossius Morten Ingvar (Norway)  
Malenica Maša (Croatia)  
Marusič Petr (Czech Republic)  
Nabbout Rima (France)  
Pressler Ronit (UK)  
Rubboli Guido (Denmark)

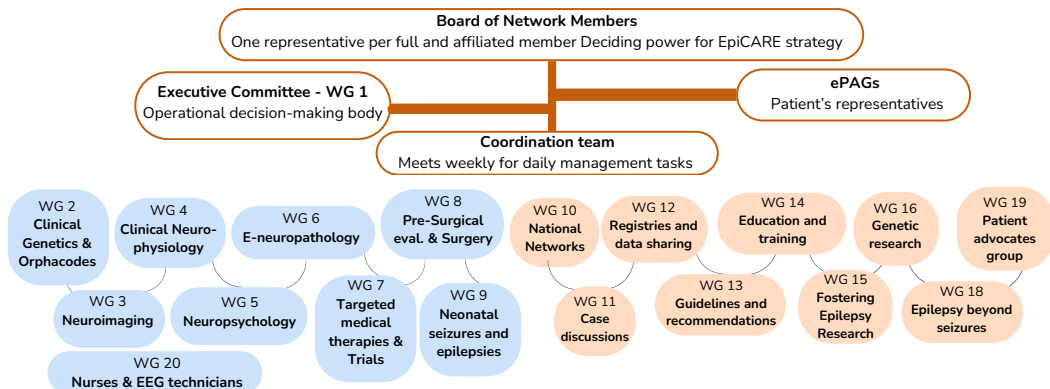
Ryvlin Philippe (Switzerland)  
Specchio Nicola (Italy)  
Trinka Eugen (Austria)  
Vigevano Federico (Italy)

**Patient representatives:**  
Brambilla Isabella (Italy)  
Irena Bibic (Croatia)

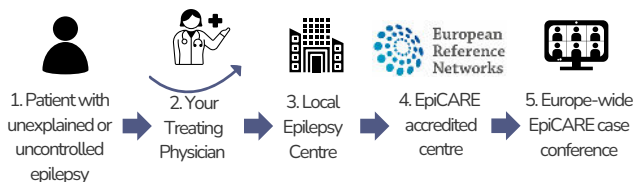
## Management Team:

Geroldinger Martin (Austria)  
Lawrence Nicola (UK)  
Robert Anne (France)  
Roig Laura (Spain)  
Tchaicha Sébile (France)  
Trebino Belén (Spain)  
Van Hulle Johanna (Belgium)

**Helpdesk:** ANT Congrès  
(Clotilde Guérineau, France)



## How to get advice from EpiCARE?



## Visit our Collaborative Genetic Research webpage



Please find the calls published on the EpiCARE website to encourage participation in collaborative genetic research projects

